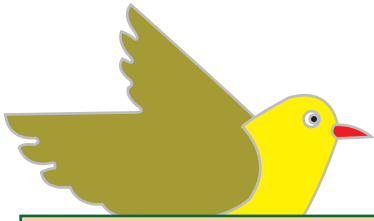




Pythagorean Triples Chart

Name _____

PTC:02



LIST OF FEW PYTHAGOREAN TRIPLES

(3, 4, 5)	(5, 12, 13)	(7, 24, 25)
(8, 15, 17)	(9, 40, 41)	(11, 60, 61)
(12, 35, 37)	(13, 84, 85)	(15, 112, 113)
(16, 63, 65)	(17, 144, 145)	(19, 180, 181)
(20, 21, 29)	(20, 99, 101)	(21, 220, 221)

Multiples of 2, 3, 4,... of each triples are also a pythagorean triples.

For e.g, (6, 8, 10) is also a pythagorean triples.

Multiple of 2 (3, 4, 5) is (6, 8, 10)

Therefore, (3, 4, 5) is a pythagorean triple.

(6, 8, 10) is also a pythagorean triple.