



TYPES OF ANGLES

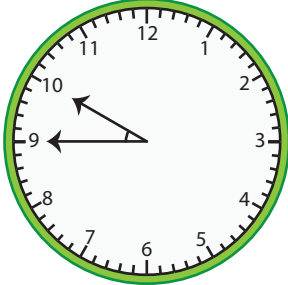
Name _____

Score _____

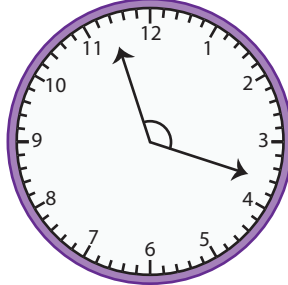
AT:22

The two arms of the clock make an angle. Write each type of angle shown on each clock.

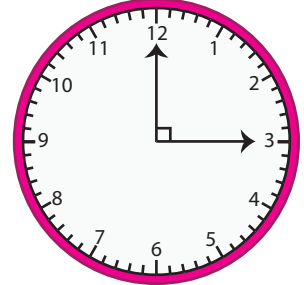
1)



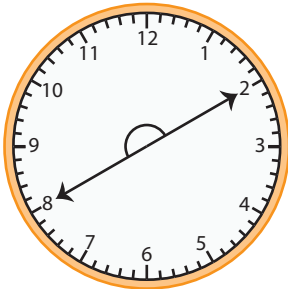
2)



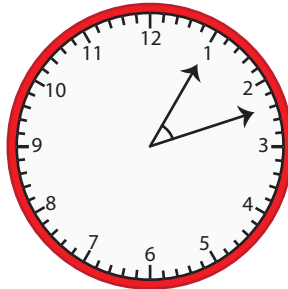
3)



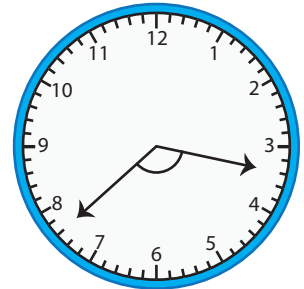
4)



5)

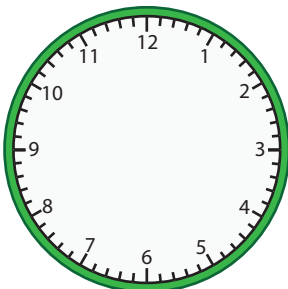


6)

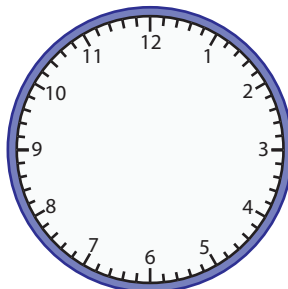


Draw the arms of the clock and write the type of angle.

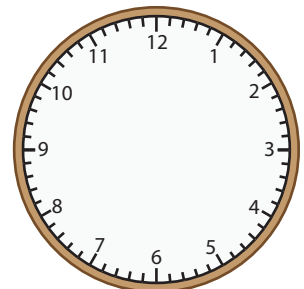
1) 03:40



2) 09:00



3) 12:10





TYPES OF ANGLES

Name _____

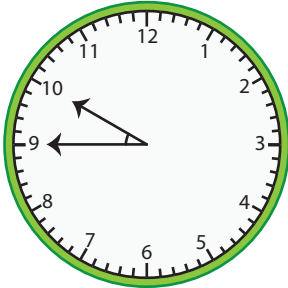
Score _____

Answer key

AT:22

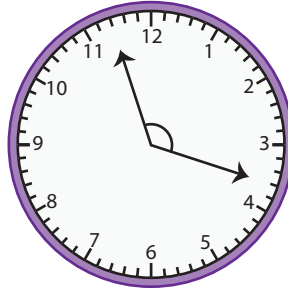
The two arms of the clock make an angle. Write each type of angle shown on each clock.

1)



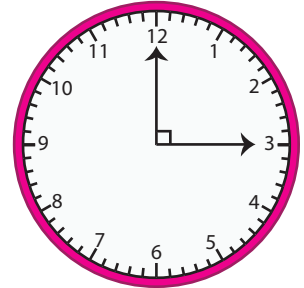
Acute angle

2)



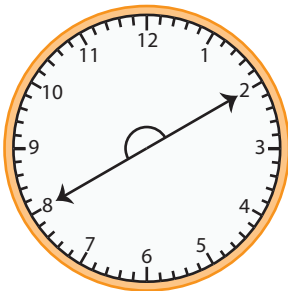
Obtuse angle

3)



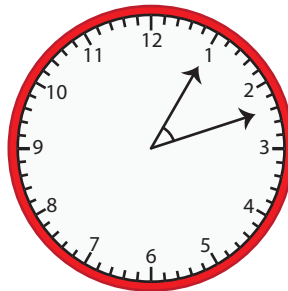
Right angle

4)



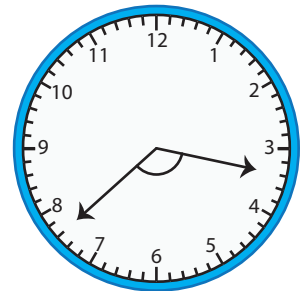
Straight angle

5)



Acute angle

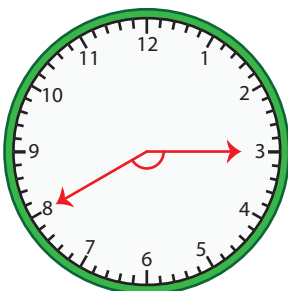
6)



Obtuse angle

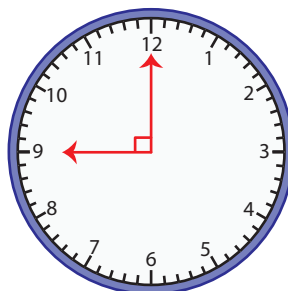
Draw the arms of the clock and write the type of angle.

1) 03:40



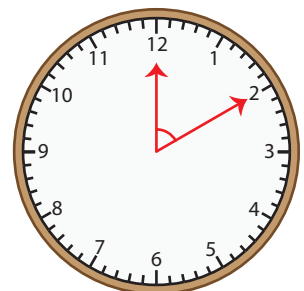
Obtuse angle

2) 09:00



Right angle

3) 12:10



Acute angle