



# TYPES OF ANGLES

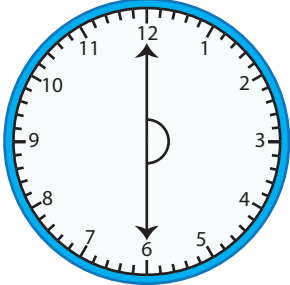
Name \_\_\_\_\_

Score \_\_\_\_\_

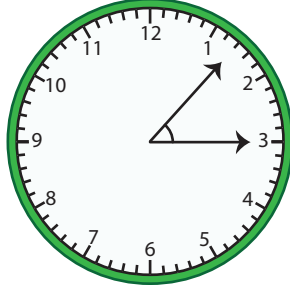
AT:21

The two arms of the clock make an angle. Write each type of angle shown on each clock.

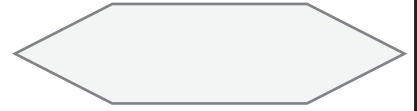
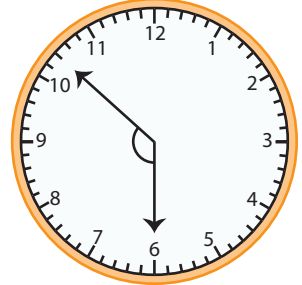
1)



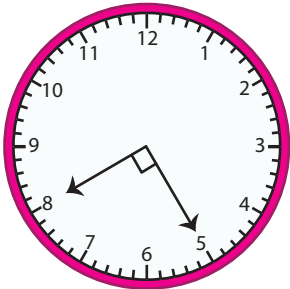
2)



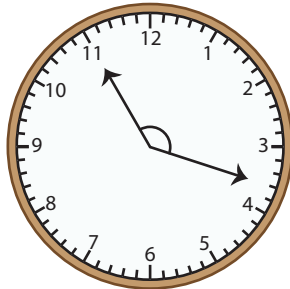
3)



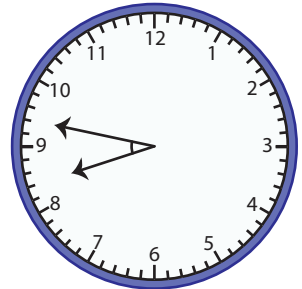
4)



5)

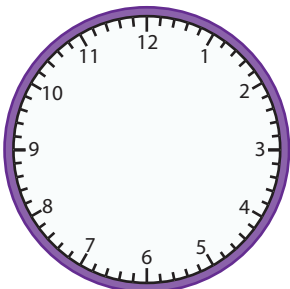


6)

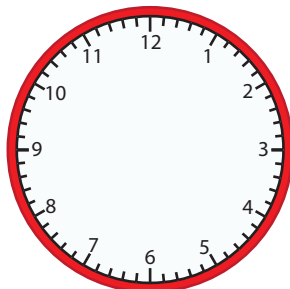


Draw the arms of the clock and write the type of angle.

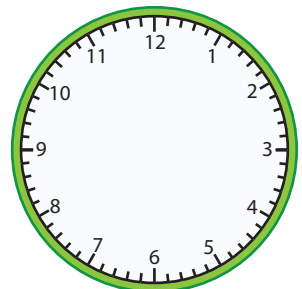
1) 01:22



2) 07:41



3) 09:15





# TYPES OF ANGLES

Name \_\_\_\_\_

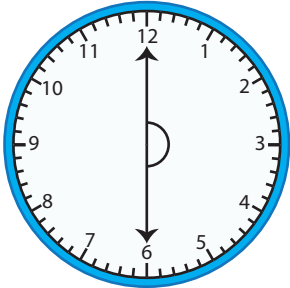
Score \_\_\_\_\_

## Answer key

AT:21

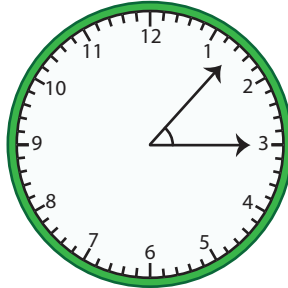
The two arms of the clock make an angle. Write each type of angle shown on each clock.

1)



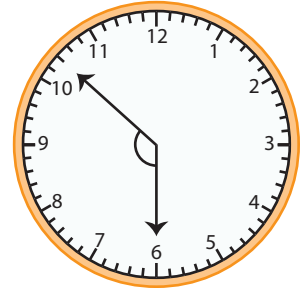
**Straight angle**

2)



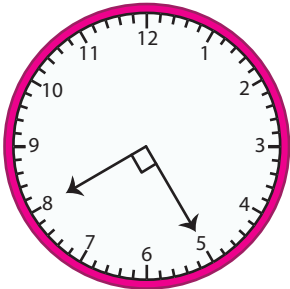
**Acute angle**

3)



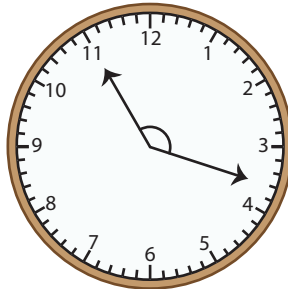
**Obtuse angle**

4)



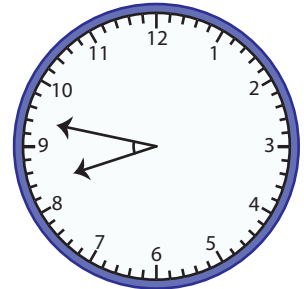
**Right angle**

5)



**Obtuse angle**

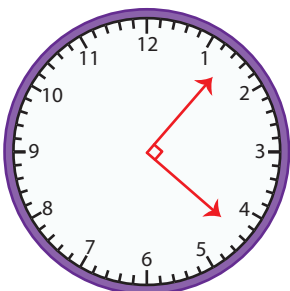
6)



**Acute angle**

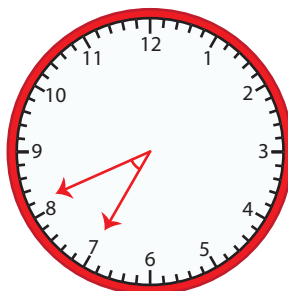
Draw the arms of the clock and write the type of angle.

1) 01:22



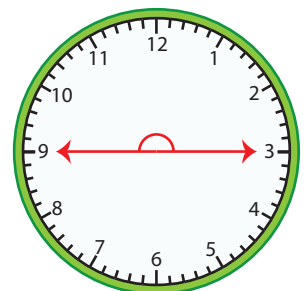
**Right angle**

2) 07:41



**Acute angle**

3) 09:15



**Straight angle**