



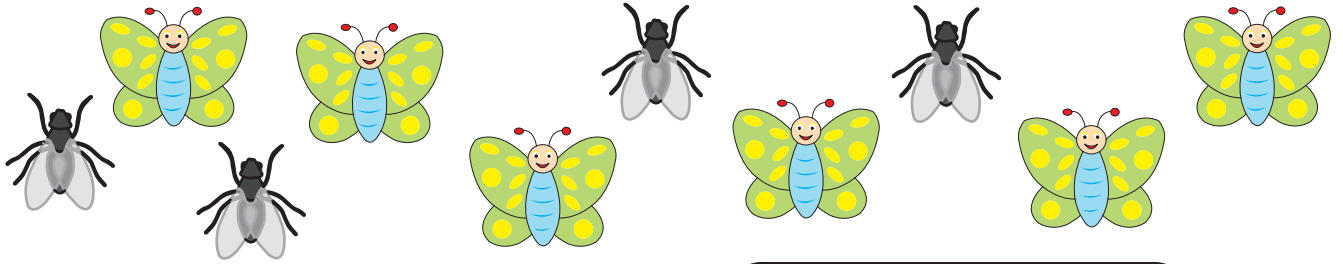
# RATIO

Name \_\_\_\_\_

Score \_\_\_\_\_

RO:04

1)



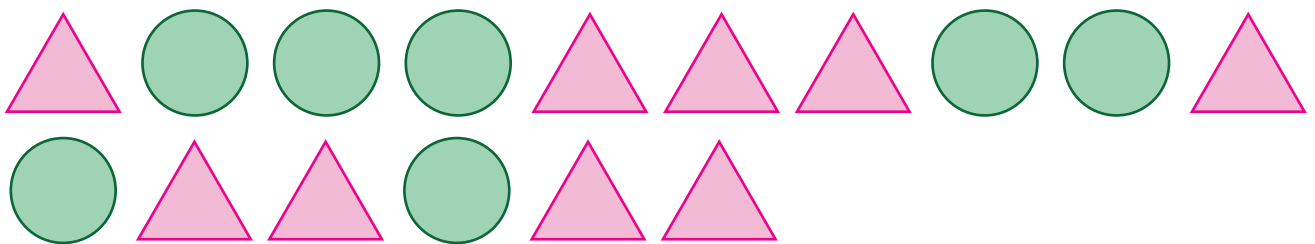
a) What is the ratio of butterflies to houseflies?

b) The ratio of insects to butterflies is

c) Write the ratio of houseflies to insects.

d) The ratio of houseflies to butterflies is

2)



a) The ratio of circles to triangles is

b) Write the ratio of triangles to circles.

c) The ratio of circles to shapes is

d) What is the ratio of shapes to triangles?



# RATIO

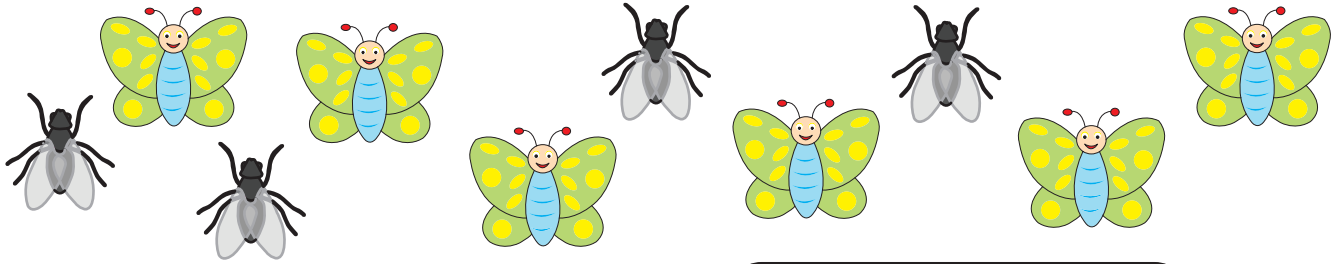
Name \_\_\_\_\_

Score \_\_\_\_\_

## Answer key

RO:04

1)



a) What is the ratio of butterflies to houseflies?

**6 : 4 or 3 : 2**

b) The ratio of insects to butterflies is

**10 : 6 or 5 : 3**

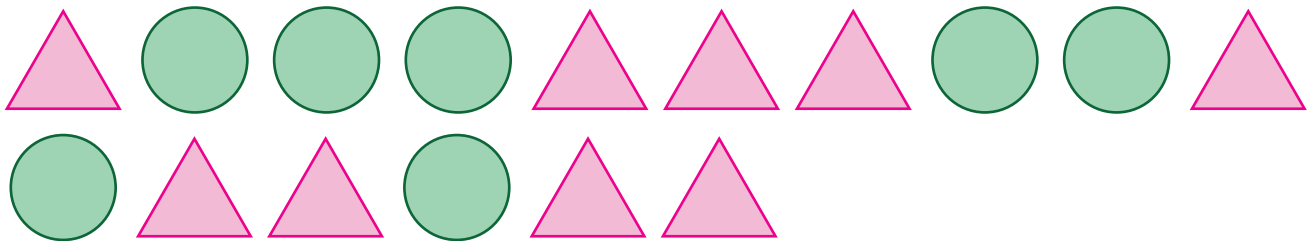
c) Write the ratio of houseflies to insects.

**4 : 10 or 2 : 5**

d) The ratio of houseflies to butterflies is

**4 : 6 or 2 : 3**

2)



a) The ratio of circles to triangles is

**7 : 9**

b) Write the ratio of triangles to circles.

**9 : 7**

c) The ratio of circles to shapes is

**7 : 16**

d) What is the ratio of shapes to triangles?

**16 : 9**